

Streamline label printing operations with dedicated printer for flexible manpower allocation

- ! - Each operation uses different printer model making it time-consuming for workers to learn to operate all models
- Worker allocation is inflexible as workers are only trained to operate specific models

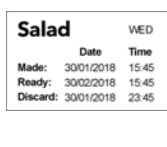
Streamlined label printing with standardised operations to optimise task allocation for workers

- Print various types of labels using one printer model with standardised steps
- With standardisation, workers can be flexibly allocated for optimal efficiency instead of being tied to specific operations



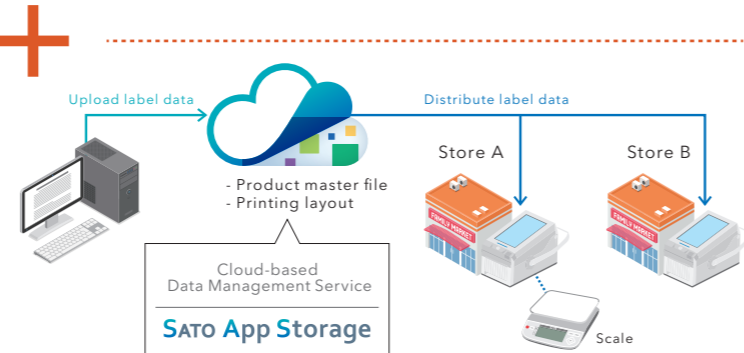
FX3-LX

Food label Food expiration date control Storage temperature To-go label



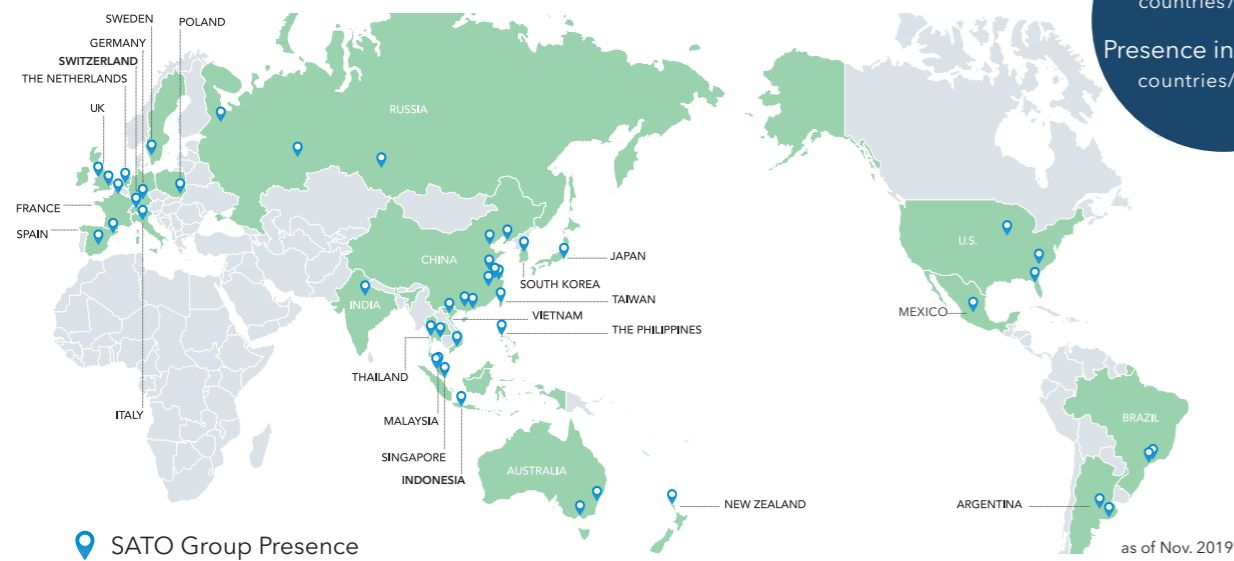
Improve efficiency of label printing

As a cloud-based data management service, SATO App Storage enables central management of label printing applications and templates. Data updates can be sent from headquarters to stores thus ensuring accuracy of label data used for printing.



In addition, printer can be connected directly with peripheral devices such as weighing scales which saves space and further streamlines label printing process.

SATO Global Network



Offices in 27 countries/regions
Presence in over 90 countries/regions

SATO Group Presence

SATO Australia Pty Limited

Regional Headquarter - VIC
6 Federation Way, Chifley Business Park,
Mentone VIC 3194, Australia
www.sato-oceania.com

Satellite Sales Office - NSW
Level 1, Unit 17, 75 Corish Circle,
Banksmeadow NSW 2019 Sydney, Australia

SATO New Zealand Limited

Regional Sales & Manufacturing
30 Apollo Drive, Mairangi Bay,
Auckland 0632, New Zealand

All information in this leaflet is accurate as of 2019 June.
Product specifications are subject to change without notice.
Any unauthorized reproduction of the contents of this leaflet, in part or whole, is strictly prohibited.
All other software, product or company names are trademarks or registered trademarks of their respective owners.



Food Manufacturing Industry Solutions



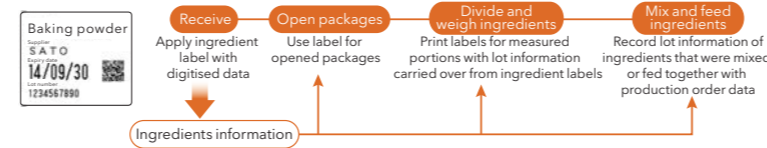
- Automate factory operations
- Streamline data management

Traceability

- ! Possibility of using incorrect or expired food ingredients
- Hard to control and minimise food loss / wastage
- Time consuming maintenance of production records
- Labor intensive data search, verification, and inventory control

Management of receiving, inventory and location transfer operations

- Automate inventory control by product type, lot number and expiry date
- Look up, export and print inventory lists based on various search conditions
- Perform stock count and visualise inventory in real-time including incoming, transferring and discarding of items
- Apply labels on ingredients at receiving to enable traceability throughout production



Management of production, weighing and mixing operations

- Know who, when, what and how much ingredients are used for each production instruction
- Yield management based on production output
- Print product label for product tracking and management



- Scan QR code on ingredient labels to avoid errors and keep digital records of ingredient usage
- Weigh accurately by connecting scales with computers



Preparation for shipping

- Manage inventory by lot and expiry date after converting recorded production output into finished product inventory
- Generate picking lists for order picking and manage shipping routes to ensure smooth field operations



Shipping accuracy and finished product traceability

- Shipping list helps ensure right products are delivered and enable traceability in the event of product defects

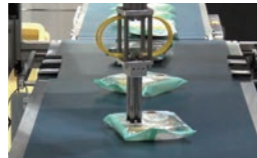


Automation

- ! Long working hours make it increasingly challenging for food manufacturers to hire workers resulting in labour shortages

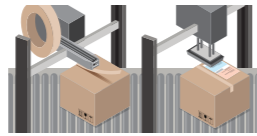
Flexible automatic label application

Automatically print and apply food labels on top / bottom / side of the product.



Automate and speed up packing and labelling processes for shipping

Manual labelling for large shipment is time and labour intensive. Auto-labeller streamlines and speeds up operation by automatically applying labels.

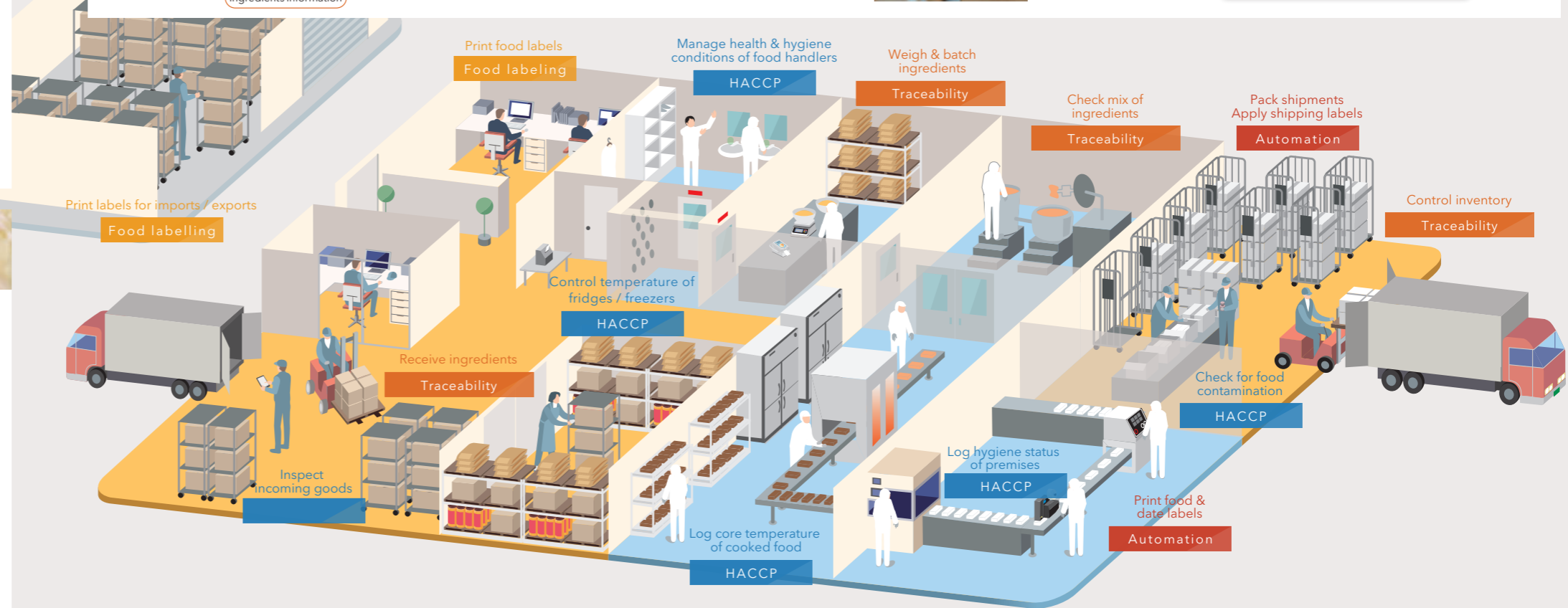


Food labelling

- ! Applying food label on export goods is time consuming

Multi language labels for export goods

With 47 print languages, our CL4NX printer is ideal for manufacturers to print labels in different languages to comply with labelling requirements of export destinations.



HACCP

- ! Document preparation for HACCP compliance is time consuming
- Manual record keeping is error-prone and takes time

Manage data on the cloud

Perform checks for risk prevention digitally via smart devices and manage recorded data centrally on the cloud.



Support multiple languages

Multi-language support for data entry is ideal for companies with foreign workers to enable simple operations with minimal training.

Run timely checks on workflows

Allow managers to check and acknowledge actions taken at any step of the manufacturing workflow via data on the cloud anytime, anywhere.

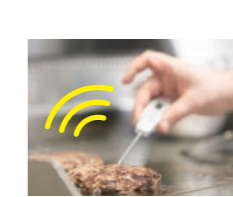
Receive alert notifications

Alert function notifies workers when temperature is out of critical limits or data has not been recorded to facilitate quick corrective action.



Connect with peripheral devices

Connect peripheral devices such as temperature probe thermometer to application via Bluetooth or Wi-Fi to automatically log temperature records and prevent manual data entry mistakes.



Core temperature thermometer (Bluetooth)



Temperature / humidity logger (Wi-Fi)



Examples of peripheral devices