



SATO CUPS Driver for Linux

User Manual

Edition 2.29.0
October 2022

Copyrights

Any unauthorized reproduction of the contents of this document, in part or whole, is strictly prohibited.
© 2022 SATO Corporation. All rights reserved.

Limitation of Liability

SATO Corporation and its subsidiaries in Japan, the U.S. and other countries make no representations or warranties of any kind regarding this material, including, but not limited to, implied warranties of merchantability and fitness for a particular purpose. SATO Corporation shall not be held responsible for errors contained herein or any omissions from this material or for any damages, whether direct, indirect, incidental or consequential, in connection with the furnishing, distribution, performance or use of this material.

Specifications and contents of this document are subject to change without notice.

Trademarks

SATO is a registered trademark of SATO Holdings Corporation and its subsidiaries in Japan, the U.S. and other countries.

Linux is a registered trademark of Linus Torvalds in the United States and other countries.

Ubuntu and Canonical are registered trademarks of Canonical Ltd.

Fedora and the Infinity design logo are trademarks of Red Hat, Inc. in the U.S. and other countries.

Firefox is a trademark of the Mozilla Foundation in the U.S. and other countries.

Bluetooth is a trademark of Bluetooth SIG, Inc., U.S.A.

All other trademarks are the property of their respective owners.

Software Updating Disclaimer

While all efforts have been taken to ensure accuracy and currency of the information contained herein, there are instances where the contents of this document may be outdated. In that case, proceed to your local SATO regional website (<https://www.sato-global.com/drivers/redirect.html>) to check whether an updated document has been made available for your reference.

Contact Information

Access the following site and select the region/country nearest to you.
<https://www.sato-global.com/about/locations.html>

Table of Content

Table of Content	3
1. Overview	4
1.1 Supported Models of SATO Printer	4
1.2 Printer Properties/Options	6
2. System Requirements	7
3. Setup	8
3.1 Installing the Driver (x86/x64).....	8
3.2 Uninstalling the Driver (x86/x64).....	9
3.3 Installing the Driver (ARMv7/ARMv8)	9
4. Managing the SATO Printer	10
4.1 Overview.....	10
4.2 Managing Printers from the Printer Administration	10
4.2.1 Adding a New Printer	10
4.2.2 Modifying the Printer Properties	15
4.2.3 Removing the Printer	17
4.3 Managing Printers from the CUPS Web Interface.....	19
4.3.1 Adding a New Printer	19
4.3.2 Modify Printers.....	22
4.3.3 Removing the Printer	24
4.3.4 Setting Default Printer Options.....	26
4.4 Managing Printers from the Command Line.....	28
4.5 Troubleshooting	28

Overview

1

The SATO Driver for Linux system was developed to allow the users to print into the SATO printer.

This driver is based on CUPS printing system for Linux. All the device communications are handled by CUPS (backend). The raster filter converts the CUPS raster graphic into SBPL which the printer can understand. For instance, if the user prints a label, the raster filter converts the graphic into SBPL command which will be sent to the printer together with the printer options.

1.1 Supported Models of SATO Printer

Currently, only the following models of printers are supported by the current version of the driver:

Series Name	Models
CG2 Series	CG208 DT/TT CG212 DT/TT
CG4 Series	CG408 DT/TT CG412 DT/TT
CL4e Series	CL408e CL412e
CL6e Series	CL608e CL612e
CL4NX Series	CL4NX 203 dpi CL4NX 305 dpi CL4NX 609 dpi
CL4NX Plus Series	CL4NX Plus 203 dpi CL4NX Plus 305 dpi CL4NX Plus 609 dpi
CL4NX-J Series	CL4NX-J 203 dpi CL4NX-J 305 dpi CL4NX-J 609 dpi
CL4NX-J Plus Series	CL4NX-J Plus 203 dpi CL4NX-J Plus 305 dpi CL4NX-J Plus 609 dpi
CL6NX Series	CL6NX 203 dpi CL6NX 305 dpi
CL6NX Plus Series	CL6NX Plus 203 dpi CL6NX Plus 305 dpi
CL6NX-J Series	CL6NX-J 203 dpi CL6NX-J 305 dpi
CL6NX-J Plus Series	CL6NX-J Plus 203 dpi CL6NX-J Plus 305 dpi
CT4i Series	CT408i CT412i
CT4-LX Series	CT4-LX 203 dpi CT4-LX 305 dpi
HC4-LX Series	HC4-LX 203 dpi HC4-LX 305 dpi
CT4-LX-J Series	CT4-LX-J 203 dpi CT4-LX-J 305 dpi
HC4-LX-J Series	HC4-LX-J 203 dpi HC4-LX-J 305 dpi

Series Name	Models
FX3-LX	FX3-LX DT305-Ln
GL4e Series	GL408e GL412e
GZ4e Series	GZ408e GZ412e
LM4e Series	LM408e LM412e
M10e	M10e
M84 Pro Series	M84 Pro 2 M84 Pro 3 M84 Pro 6
M84xxSe Series	M8485Se M8490Se M8459Se M8460Se M8465Se
MB2i Series	MB200i
MB4i Series	MB400i MB410i
PW208 Series	PW208NX PW208mNX
PW4NX Series	PW4NX 203 dpi PW4NX-J 203 dpi
S84 Series	S8408 S8412 S8424
S84-ex/S86-ex Series	S84-ex 203 dpi S84-ex 305 dpi S84-ex 609 dpi S86-ex 203 dpi S86-ex 305 dpi
S84NX Series	S84NX 203 dpi S84NX 305 dpi S84NX 609 dpi
S86NX Series	S86NX 203 dpi S86NX 305 dpi
SG112-ex	SG112-ex 305 dpi
TG3e Series	TG308e TG312e
WS4 Series	WS408 DT/TT WS412 DT/TT

1.2 Printer Properties/Options

The driver supports the following printer settings. Please take note that the setting varies depending on the printer model. For more information, refer to the printer specifications.

Property	Description
Media Size	Sets the media size. Units in inches.
Sensor Type	Specifies the selection of the transparent sensor or the reflection sensor
B&W Conversion	Allows users to select dither options for improved printing image quality. The choices are: - Dither (default) will be used for images. - Threshold (50%) will give sharp edges for text and bar codes. - Threshold (75%) will give sharp edges for text and bar codes, darker than 50%. - Threshold (25%) will give sharp edges for text and bar codes, lighter than 50%.
Print Method	Sets the Print method/type such as Thermal Type and Direct Thermal Type
Resolution	Sets the print density
Print Speed	Sets the print speed
Darkness Range	Sets the print darkness. The print density parameter can be specified in six options from "A" to "F".
Darkness Level	Sets the print darkness level. The print density level parameter can be specified in five options from "1" to "5"
Print Mode	Sets the operation mode such as Continuous, Tear Off, Cutter and Dispenser Operation
Cutter	Sets the cutter options. This is only applicable for printer units with cutter. Cutter Operation Mode should also be selected to make it work
Vertical Offset	Sets the start position coordinate. Specifies the vertical start position correction signal. Units in inches
Horizontal Offset	Sets the start position coordinate. Specifies the horizontal start position correction signal. Units in inches

System Requirements

2

The minimum system requirements for the SATO Driver are:

- ◆ IBM-compatible PC (CPU architecture: x86 and x64)
- ◆ Linux distributions such as RPM and DEB

DEB	Ubuntu 11.10 or higher
RPM	Fedora 16 or higher

- ◆ CUPS printing system for Linux (1.5 or higher)
- ◆ At least one supported model of SATO printer that can connect to the machine
- ◆ *For Bluetooth communication, it is necessary to install the “**blue-cupz**” package. This package contains a driver to let CUPS print to Bluetooth-connected printers. BlueZ is the official Linux Bluetooth protocol stack. Please check your Operating system documentation for compatibility.

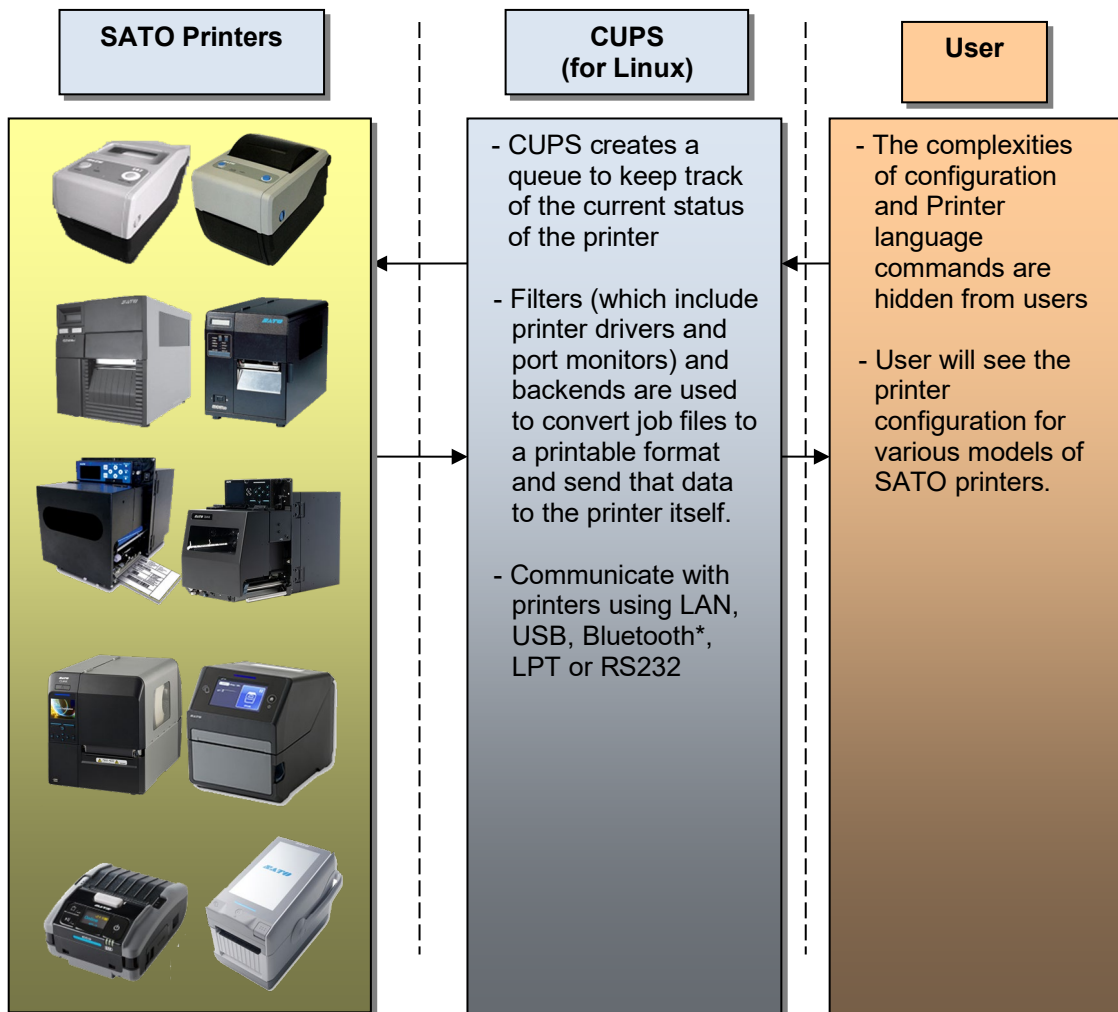


Figure 1 Overview

Setup

3

3.1 Installing the Driver (x86/x64)

After obtaining the packages perform the following actions below.

Note: The screenshots may look different depending on the Linux Distribution you are using.

- 1) Log in as the root user. Otherwise, add the “sudo” or “su” command to obtain root permissions in front of each command you type in.
- 2) Launch the Terminal.



Figure 2 Terminal screen

- 3) Locate the package file. For example, if you saved the packages in the “Documents/SATO” folder you can type in:
`cd ~/Documents/SATO [ENTER]`

- 4) To install the package, use the corresponding commands below:

For .deb files you can type in:

`dpkg -i [insert package name].deb [ENTER]`

For .rpm files you can type in:

`rpm -i [insert package name].rpm [ENTER]`

For .gz files perform the following actions below:

- 1) Extract the package [insert package name].tar.gz into your local folder
- 2) Run the satodriver.install

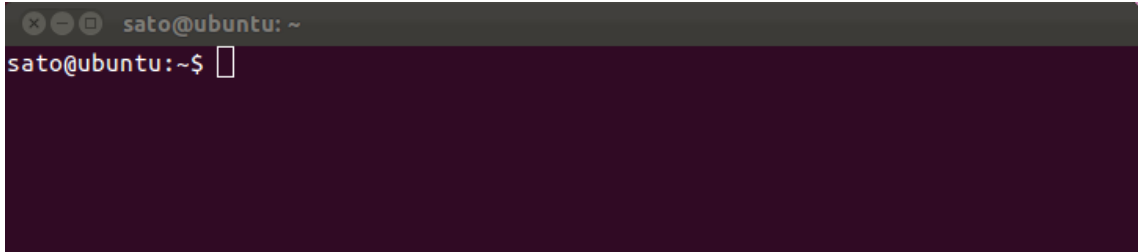
On the occasion that the driver is already installed, an error will occur. To overwrite it, specify the “--force” option

`dpkg -i --force [insert package name].deb [ENTER]`

- 5) After a short delay, the driver will be installed automatically into your system.

3.2 Uninstalling the Driver (x86/x64)

- 1) Log in as the root user. Otherwise, add the “sudo” or “su” command to obtain root permissions in front of each command you type in.
- 2) Launch the Terminal.

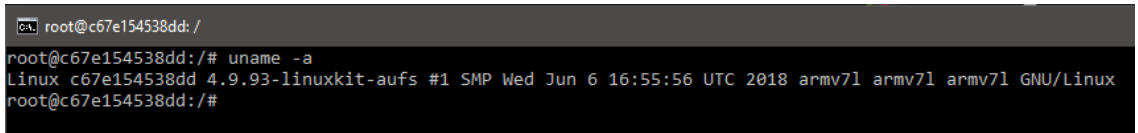
A terminal window with a dark background. The prompt is 'sato@ubuntu: ~' and the user has entered 'sato@ubuntu:~\$' with a cursor.

- 3) To delete the package, you can type in:

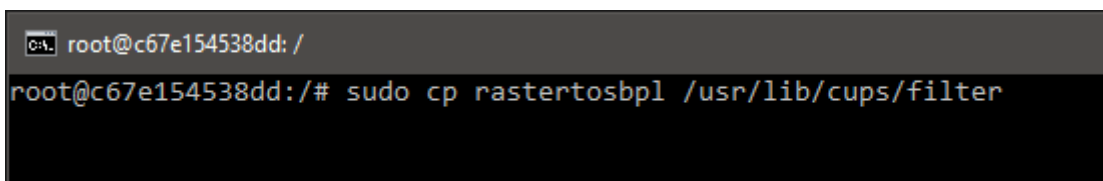
x86: `dpkg -r satodriver`
x64: `dpkg -r satodriver:amd64`

3.3 Installing the Driver (ARMv7/ARMv8)

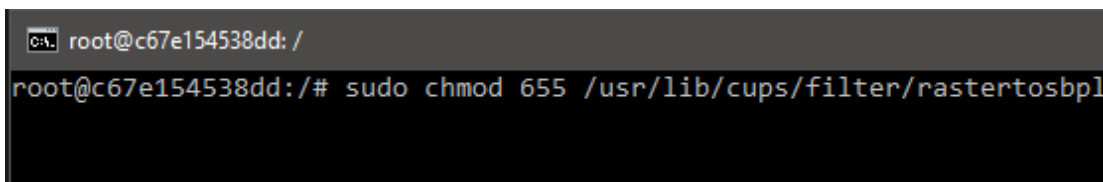
- 1) Download the Driver and PostScript Printer Description (PPD) zip files from your local SATO regional website (<https://www.sato-global.com/drivers/redirect.html>).
- 2) To determine the correct driver to download, run the `uname -a` command. This command will return the processor architecture, in the case below its ARMv7.

A terminal window showing the output of the 'uname -a' command. The output is: 'Linux c67e154538dd 4.9.93-linuxkit-aufs #1 SMP Wed Jun 6 16:55:56 UTC 2018 armv7l armv7l armv7l GNU/Linux'.

- 3) Extract the file in your local folder. (ex. Documents)
- 4) Locate and copy the downloaded rastertosbpl file into the Cups filters folder. If there is an existing rastertosbpl file in the filter folder make sure to delete it first.

A terminal window showing the command 'sudo cp rastertosbpl /usr/lib/cups/filter' being executed.

- 5) Give the correct permission to the rastertosbpl file.

A terminal window showing the command 'sudo chmod 655 /usr/lib/cups/filter/rastertosbpl' being executed.

- 6) Since there are no installers for this package, you will need to use the PPD approach when adding the printer (refer to 4.2.1 or 4.3.1 Adding a New Printer section).

Managing the SATO Printer

4

4.1 Overview

Printers can be managed using the CUPS web interface, Printer Administration and by the use of the command-line program. The easiest way to manage the printer is through the OS Printer Settings because it provides a step-by-step wizard screen for you to follow.

The CUPS supports devices such as Serial, USB, LAN and LPT.

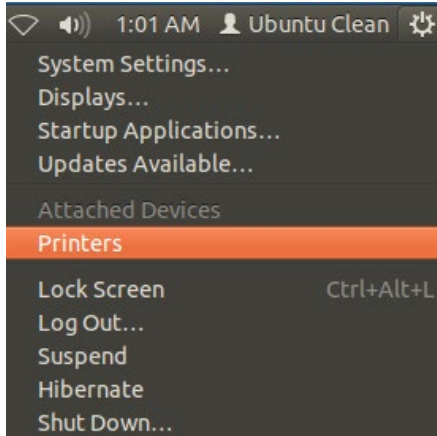
Note: The screenshots may look different depending on the Linux Distribution you are using.

4.2 Managing Printers from the Printer Administration

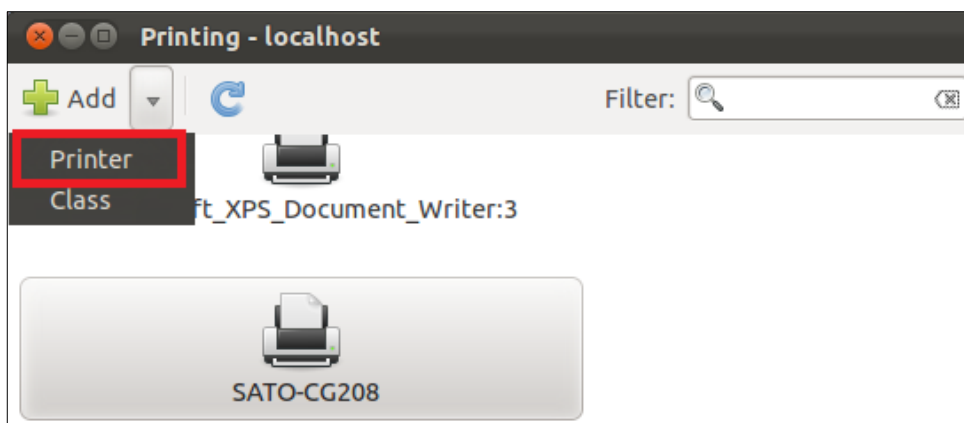
4.2.1 Adding a New Printer

To add a new printer from the Printer Administration, perform the following actions below:

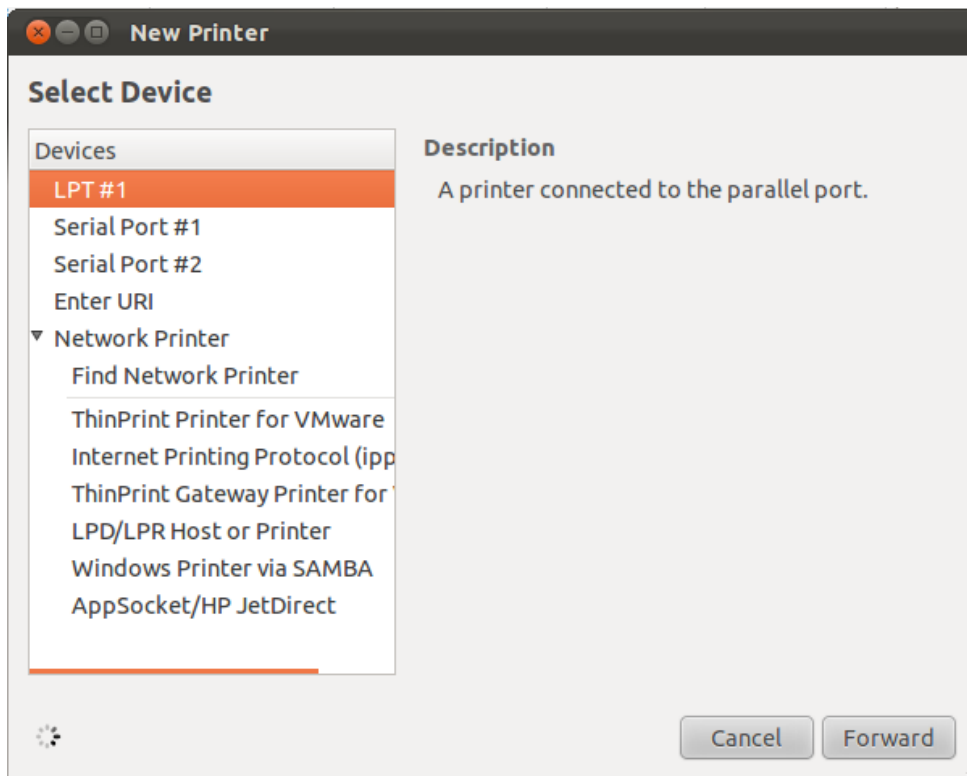
- 1) Locate the Printer Settings.



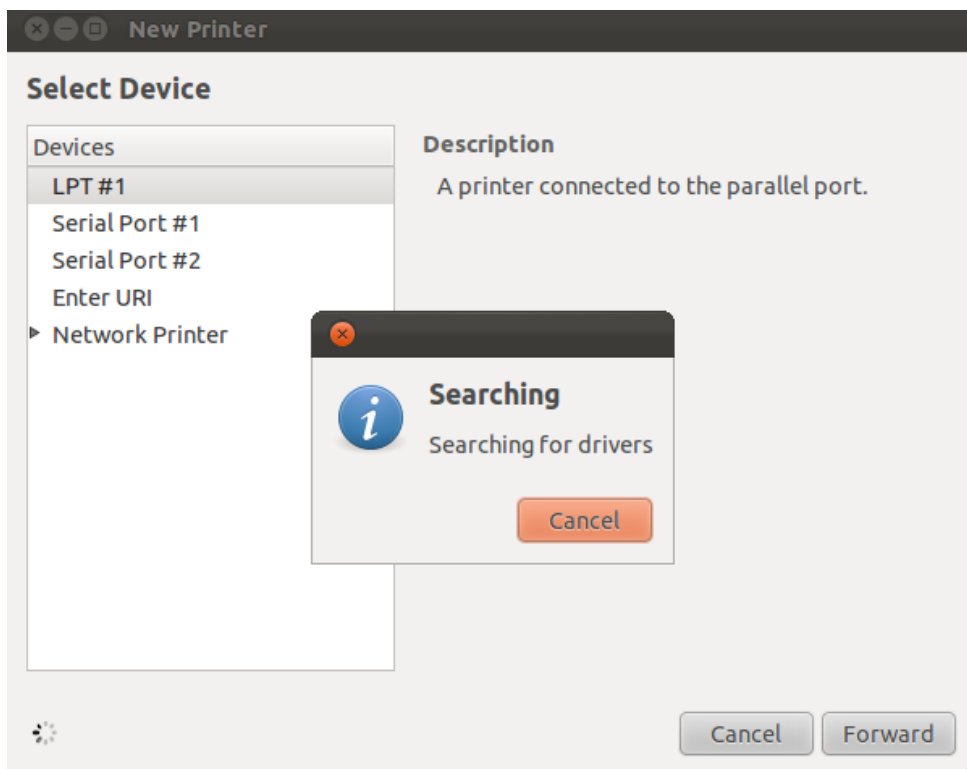
- 2) Click the Add > Printer option in the menu.



- 3) Select the device from the selection and click the Forward button.



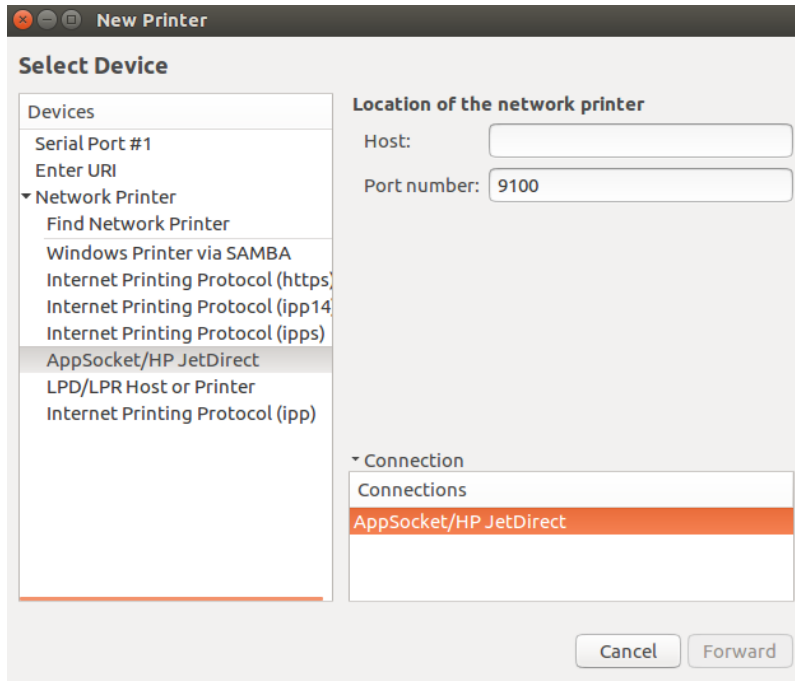
- 4) The system will start searching for existing drivers. If the printer information is found, it will automatically add the printer into the system.



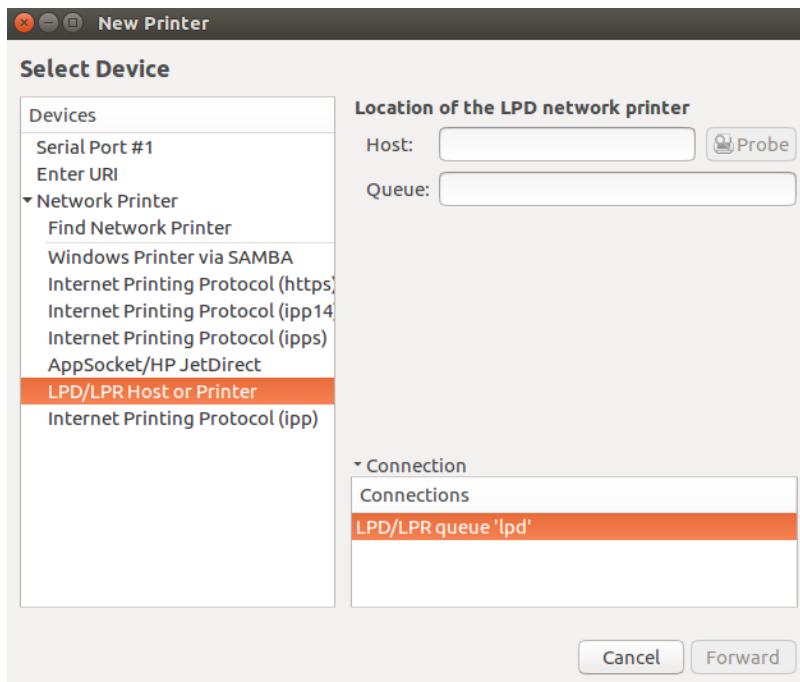
- 5) In case the system couldn't find the printer information, you will be asked to manually select the printer you wish to add.

You can choose any of the "Other Network Printers" options. After that, you will be asked to enter the Device URI/Hosts of the printer.

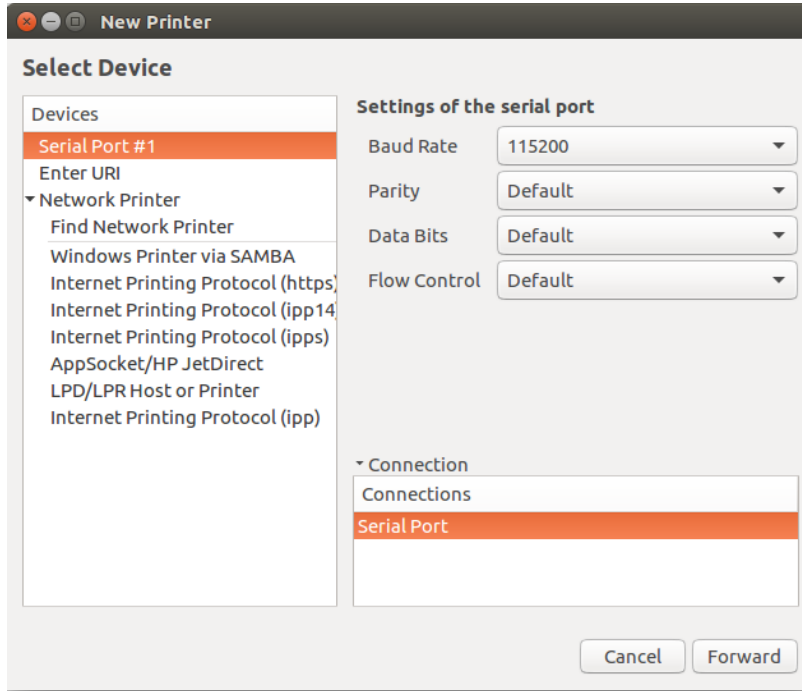
For LAN/WLAN:



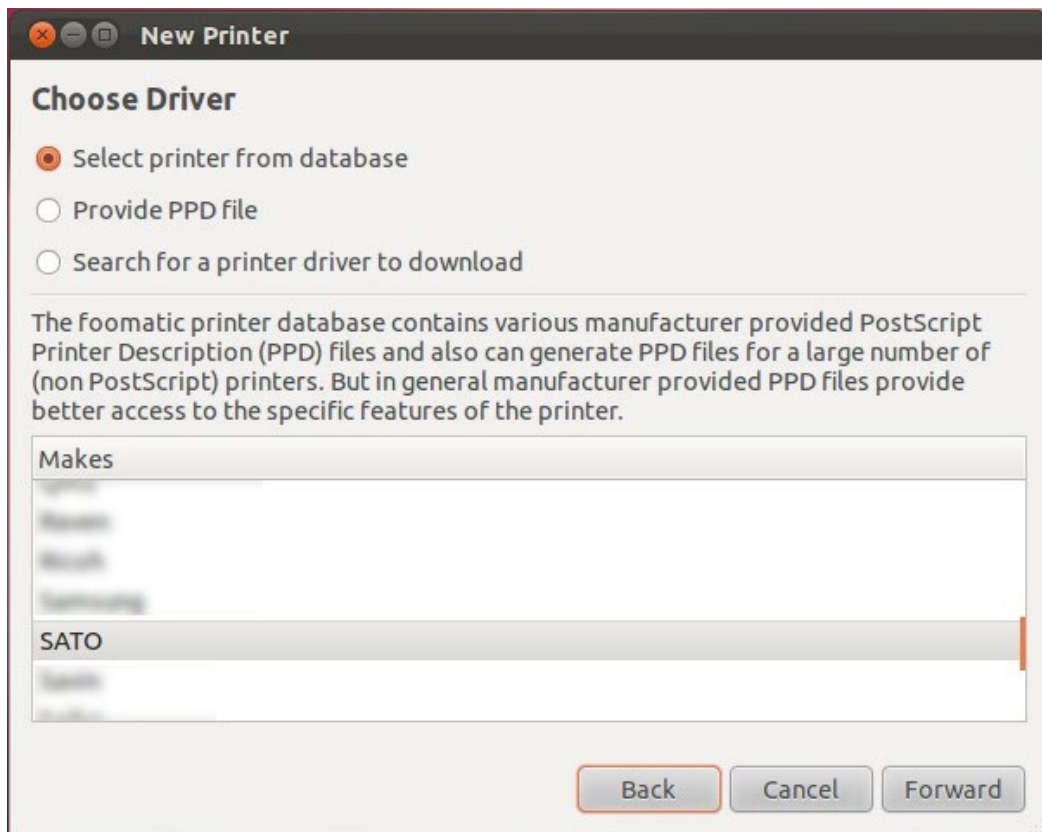
For Bluetooth (pairing the device with the PC/Laptop first is necessary):



For Serial:

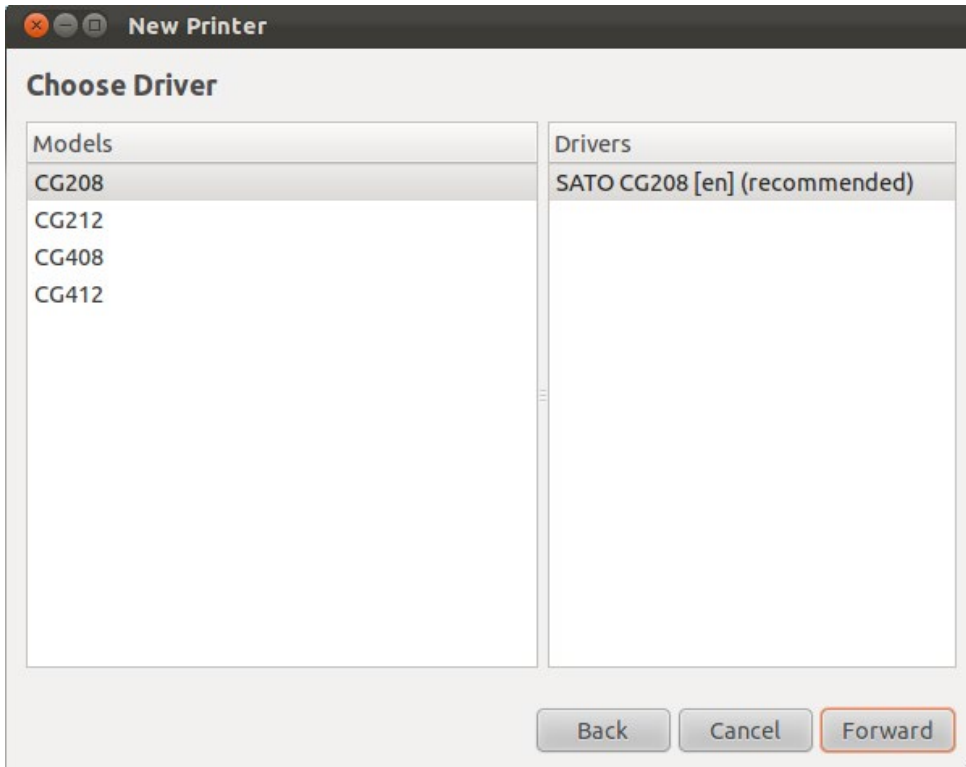


6) Select the "Select printer from the database" option from Choose Driver selection screen.

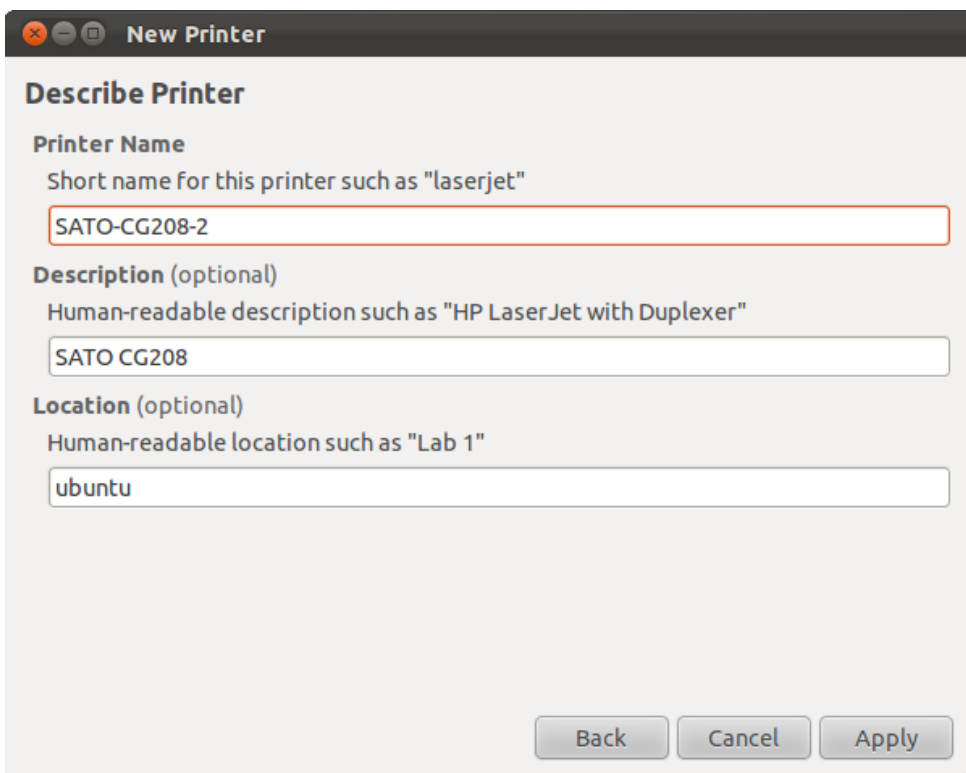


7) Select "SATO" in the Makes/Manufacturer selection and click the Forward button.

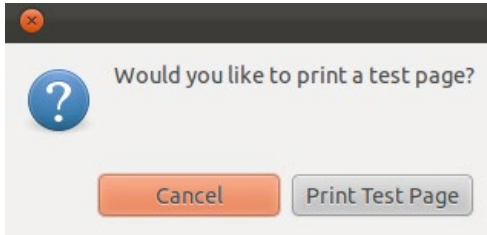
- 8) Select the specific printer model you wish to add.



- 9) Alternatively, you can select the printer PPD if you have the file or if you manually install the driver (ex. Using the ARMv7 driver).
- 10) Verify the information and click the Apply button.



11) Click the Print Test Page button to test the printer. Make sure your printer is online.

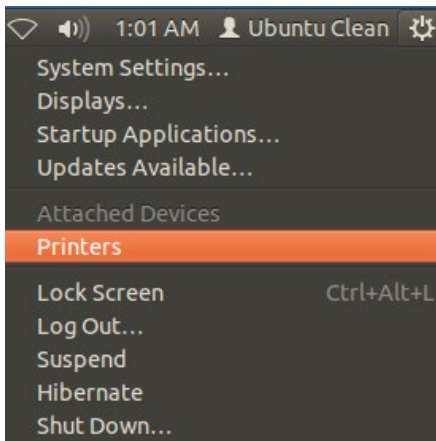


12) Check your test print.

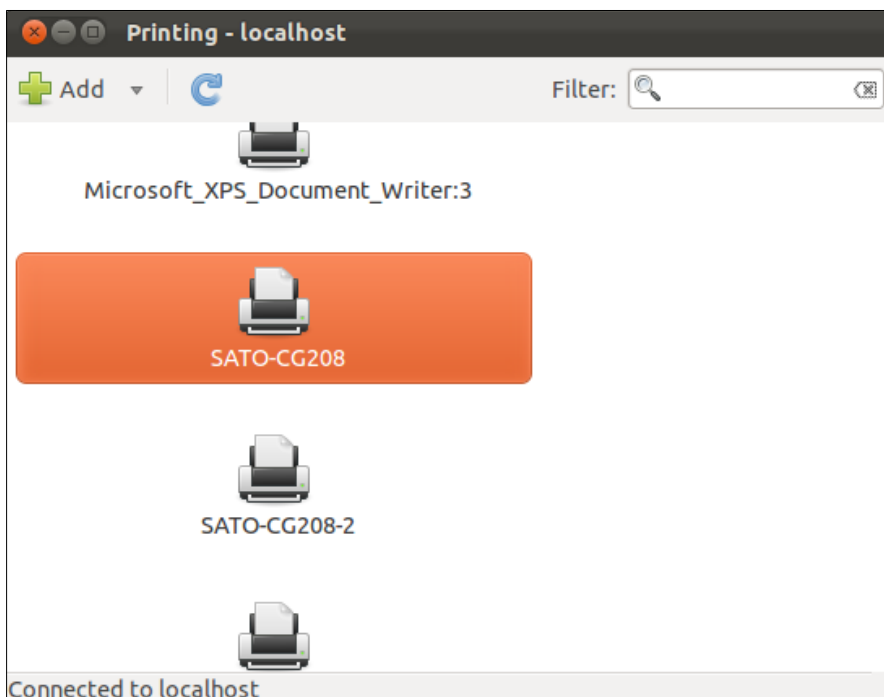
4.2.2 Modifying the Printer Properties

To modify the printer properties, perform the following actions below:

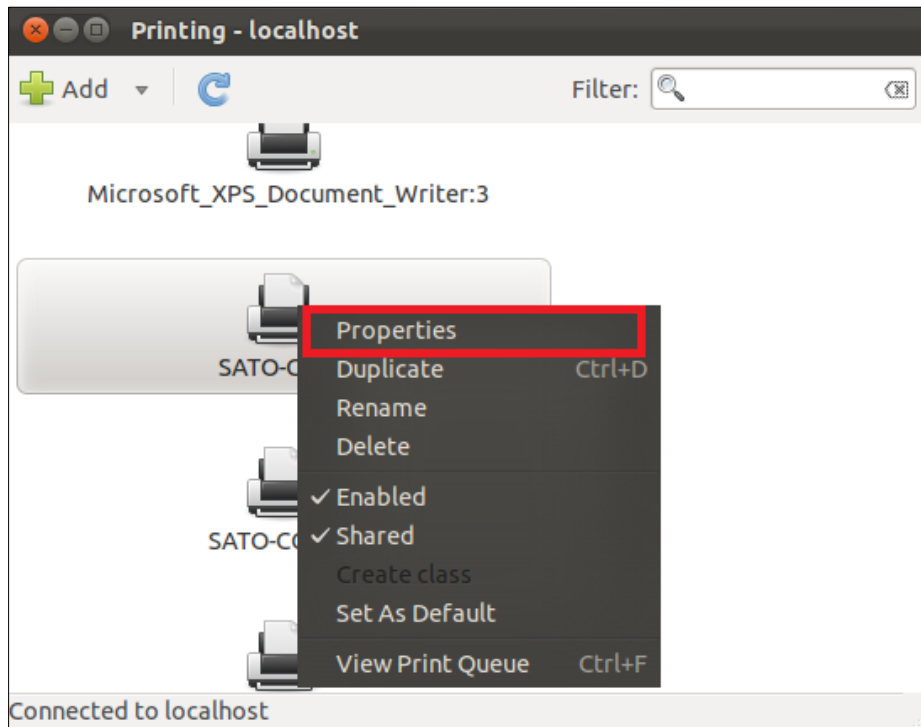
1) Locate the Printer Settings.



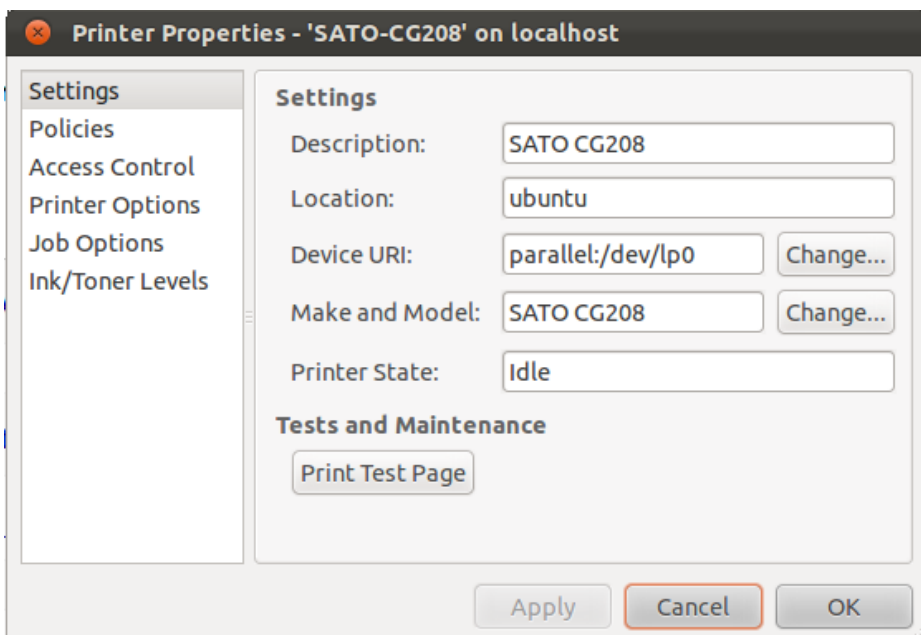
2) Select the printer you wish to modify on the screen.



3) Right-click on the selected printer and click Properties.



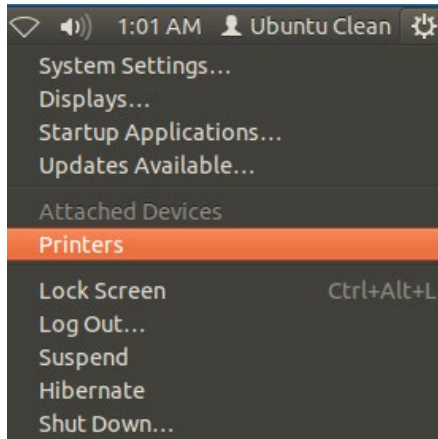
4) Modify the printer properties and click the Apply button.



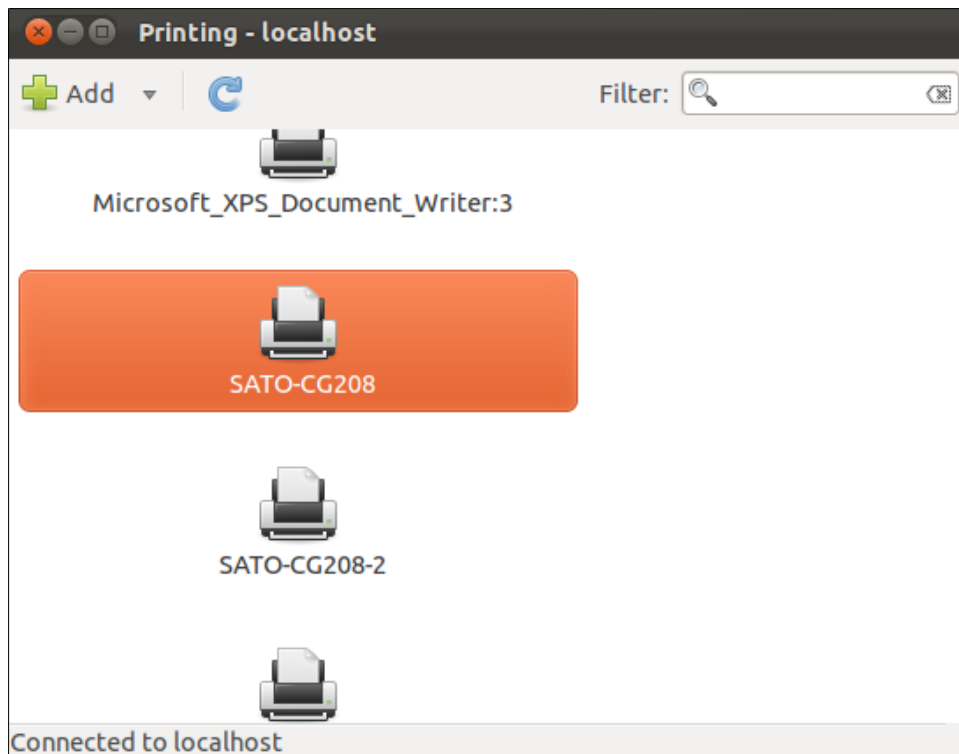
4.2.3 Removing the Printer

To remove the existing printer properties, perform the following actions below:

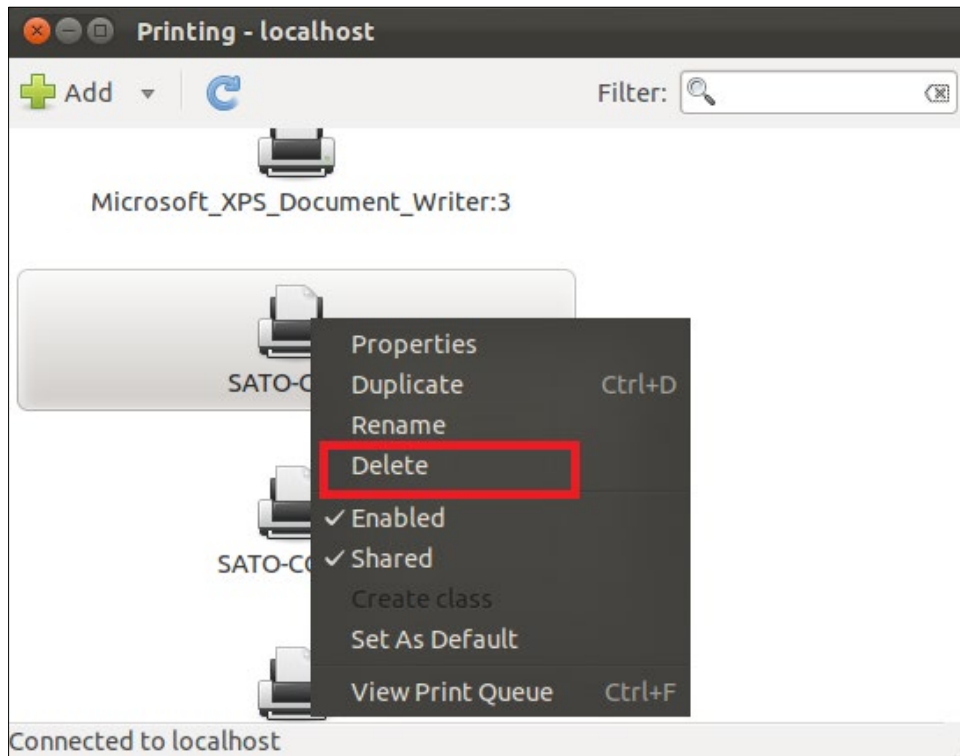
- 1) Locate the Printer Settings.



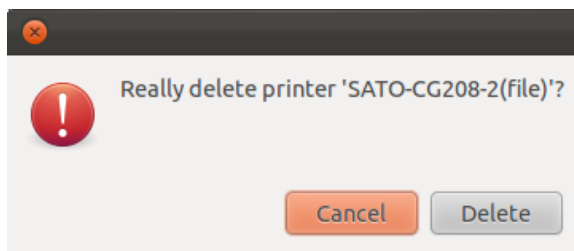
- 2) Select the printer you wish to modify on the screen.



3) Right-click on the selected printer and click “Delete”.



4) Click the “Delete” button to confirm.



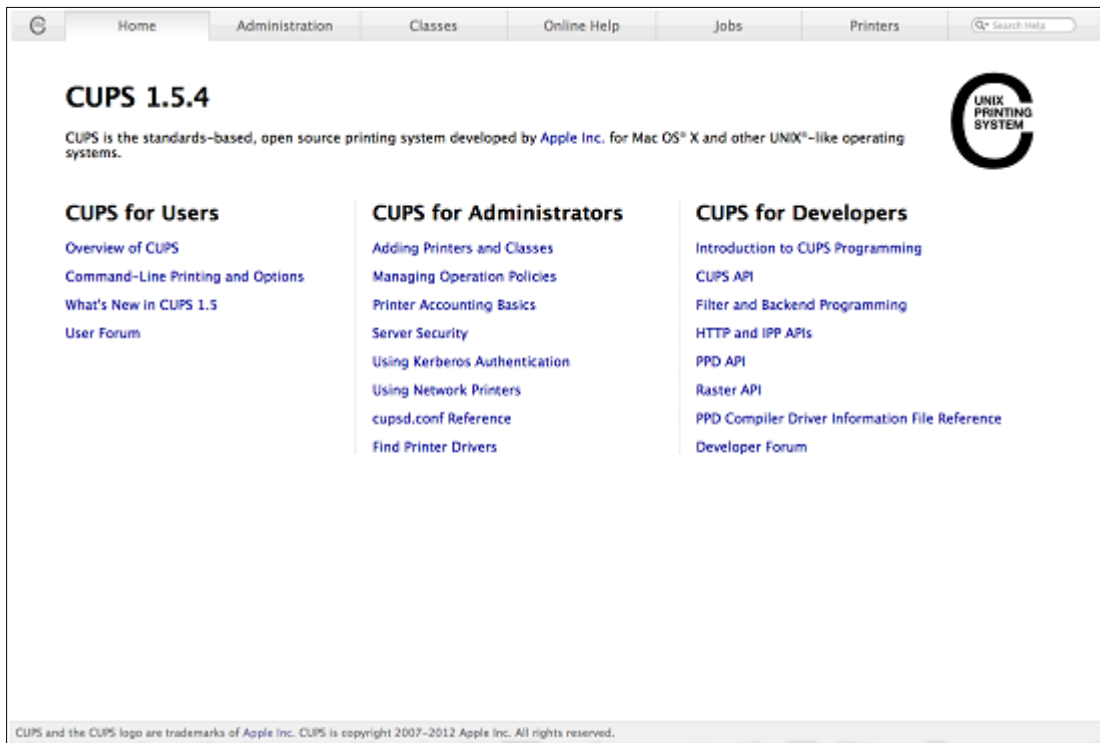
4.3 Managing Printers from the CUPS Web Interface

Most Linux system with CUPS installed has a **CUPS Web Interface** wherein users can manage printers in the system.

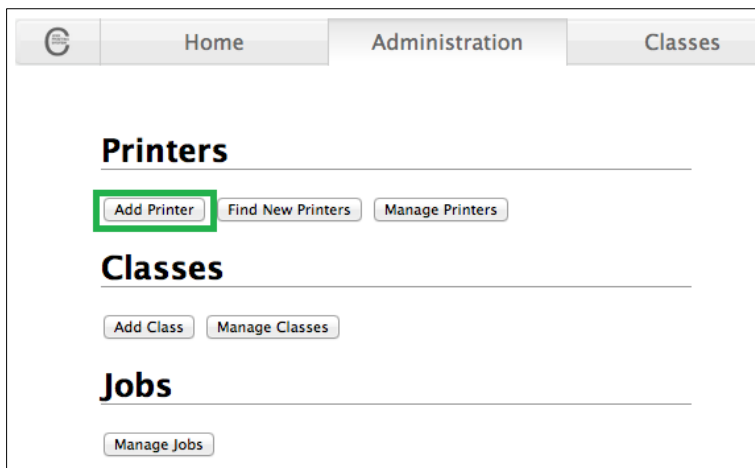
4.3.1 Adding a New Printer

To add a new printer from the **CUPS Web Interface**, perform the following actions below:

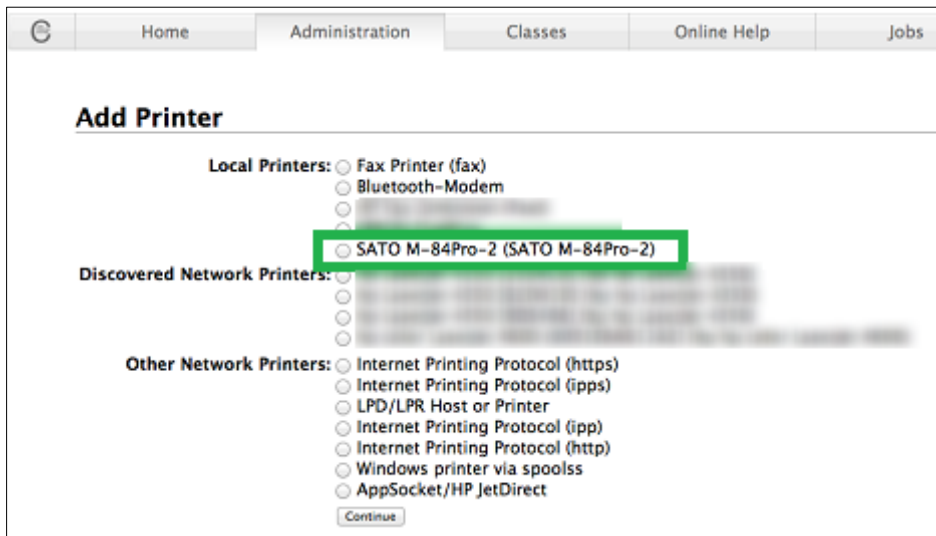
- 1) Open a web browser (example: Firefox web browser) and type in "<http://localhost:631/>" in the address bar.



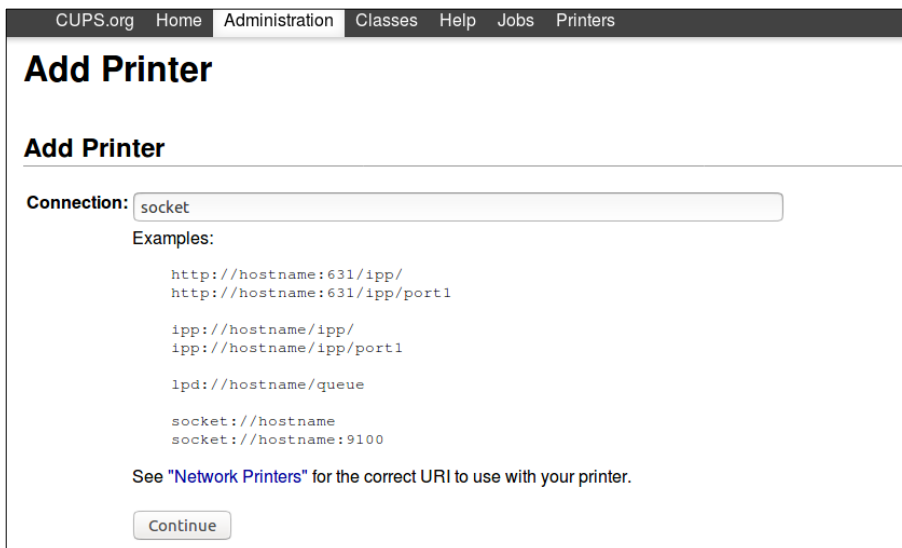
- 2) On the **Home** page, click **Administration** at the top of the menu.
- 3) Click **Add Printers**.



4) Select the printer you wish to add and click **Continue**.



Alternatively, if you cannot detect the printer, you can choose from any of the “Other Network Printers” options. After that, you will be asked to enter the Device URI/Host of the printer.



Note: For Bluetooth, you can use “bluetooth://<device mac address>” but make sure to pair the device with the PC/Laptop first.

- 5) Printer information will be loaded on the page. Modify the information depending on your needs.

The screenshot shows a web interface with a navigation bar containing 'Home', 'Administration', and 'Classes'. The main heading is 'Add Printer'. Below the heading, there are several fields: 'Name' with the value 'SATO_M-84Pro-2' and a note '(May contain any printable characters except "/", "#", and space)'; 'Description' with the value 'SATO M-84Pro-2' and a note '(Human-readable description such as "HP LaserJet with Duplexer")'; 'Location' with an empty field and a note '(Human-readable location such as "Lab 1")'; 'Connection' with the value 'usb://SATO/M-84Pro-2?location=fd130000'; and 'Sharing' with a checked checkbox 'Share This Printer'. At the bottom, there is a 'Continue' button.

- 6) CUPS will detect the printer model that best describes the printer. Click **Add** to complete the process. If the selected model is incorrect, you can manually select the printer from the list.

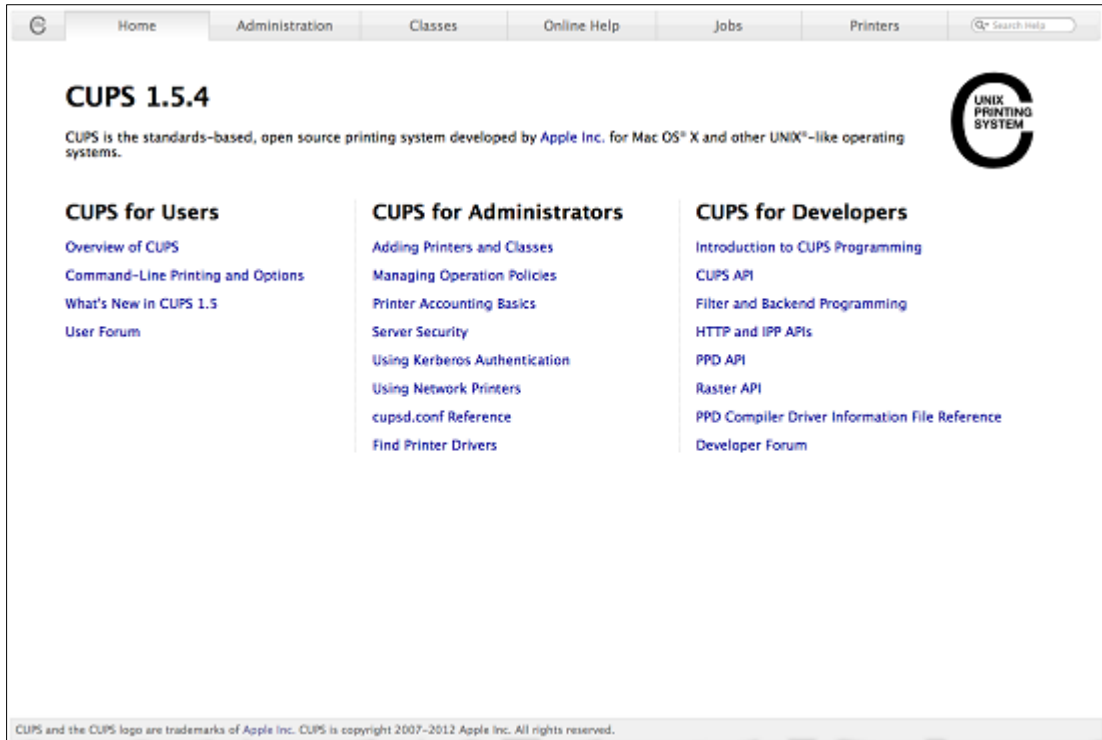
The screenshot shows the same 'Add Printer' web interface. The 'Name', 'Description', and 'Location' fields are now populated with the values from the previous step. The 'Connection' field is also populated. The 'Sharing' checkbox is checked. The 'Make' field is set to 'SATO' with a dropdown arrow and the text 'Select Another Make/Manufacturer'. The 'Model' field is a dropdown menu with the following options: 'SATO M-84Pro-2 (en, en)', 'SATO CG208 (en, en)', 'SATO CG212 (en, en)', 'SATO CG408 (en, en)', 'SATO CG412 (en, en)', 'SATO CL608e (en, en)', 'SATO CL612e (en, en)', 'SATO GZ408e (en, en)', 'SATO GZ412e (en, en)', and 'SATO M-84Pro-3 (en, en)'. Below the dropdown, there is a section 'Or Provide a PPD File:' with a 'Choose File' button and the text 'no file selected'. At the bottom, there is an 'Add Printer' button.

- 7) Alternatively, you can select the printer PPD if you have the file or if you manually install the driver (ex. Using the ARMv7 driver).

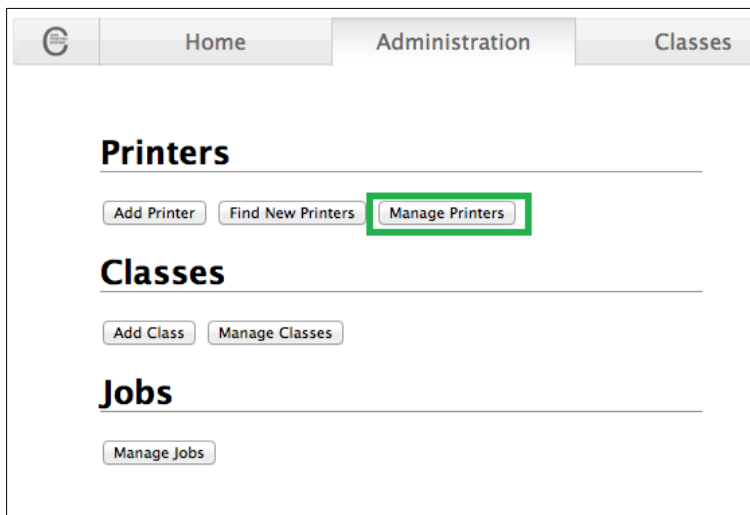
4.3.2 Modify Printers

To modify an existing printer, perform the following actions below:

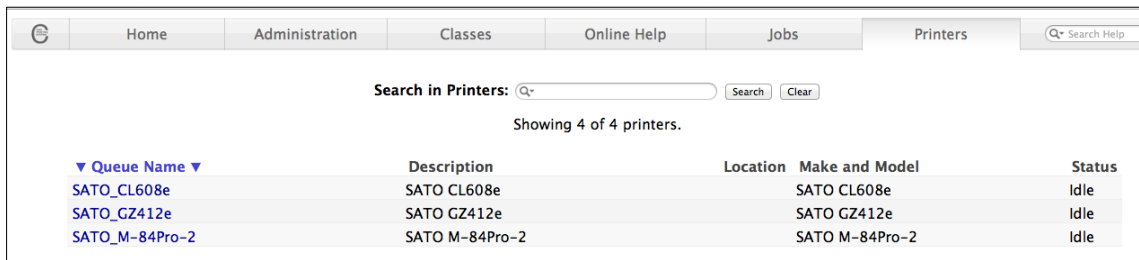
- 1) Open a web browser (example: Firefox web browser) and type in "<http://localhost:631/>" in the address bar.



- 2) On the **Home** page, click **Administration** at the top of the menu.
- 3) Click **Manage Printers**.

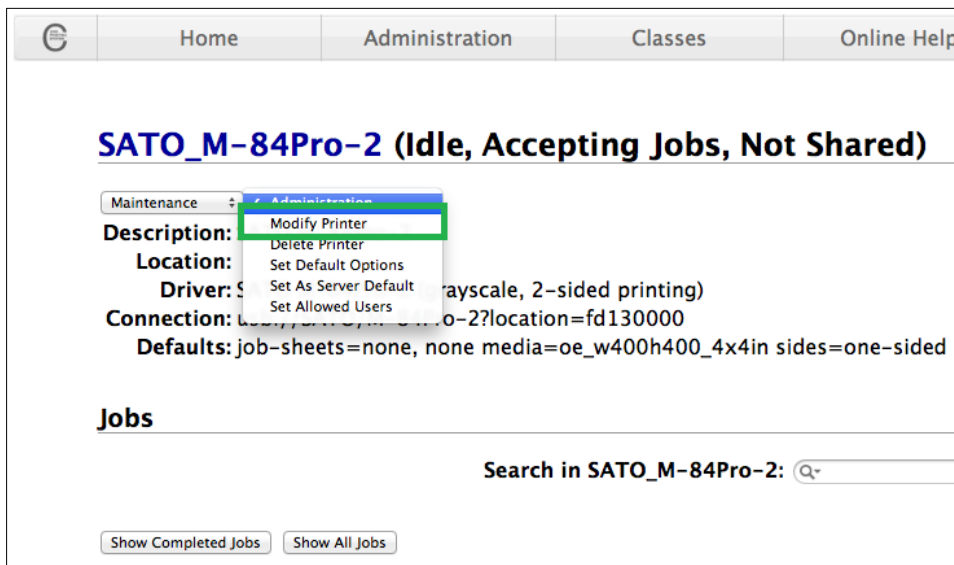


- 4) Select the printer you wish to modify on the list.



Queue Name	Description	Location	Make and Model	Status
SATO_CL608e	SATO CL608e		SATO CL608e	Idle
SATO_GZ412e	SATO GZ412e		SATO GZ412e	Idle
SATO_M-84Pro-2	SATO M-84Pro-2		SATO M-84Pro-2	Idle

- 5) On the Administration dropdown, select **Modify Printer**.



SATO_M-84Pro-2 (Idle, Accepting Jobs, Not Shared)

Maintenance Administration

Description: Modify Printer
Delete Printer

Location: Set Default Options

Driver: Set As Server Default
Set Allowed Users

Connection: ...?location=fd130000

Defaults: job-sheets=none, none media=oe_w400h400_4x4in sides=one-sided

Jobs

Search in SATO_M-84Pro-2:

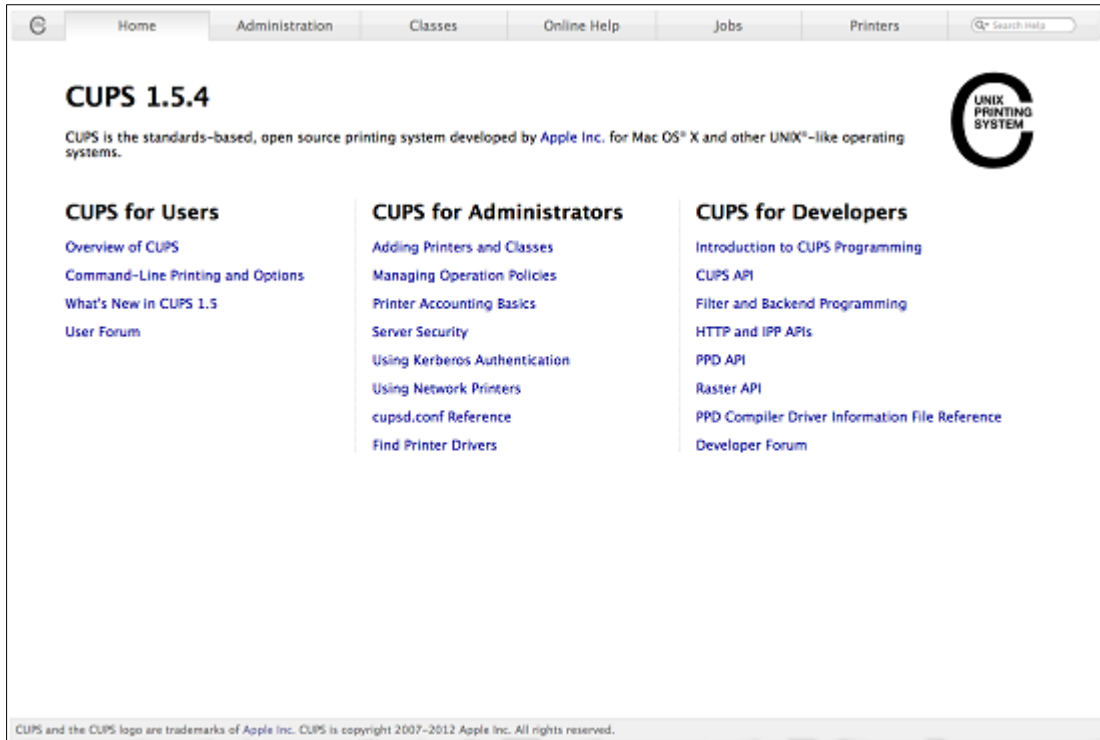
Show Completed Jobs Show All Jobs

- 6) Select the printer you wish to modify and click **Continue**.
- 7) Printer information will be loaded on the page. Modify the information depending on your needs.
- 8) CUPS will detect the printer model that best describes the printer. Click **Modify Printer** to complete the process.

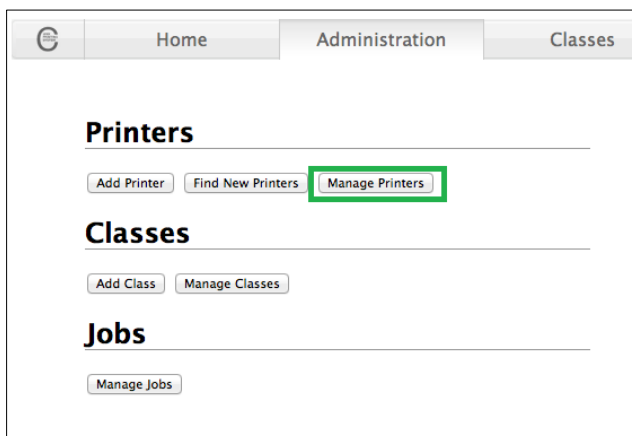
4.3.3 Removing the Printer

To remove existing printer properties, perform the following actions below:

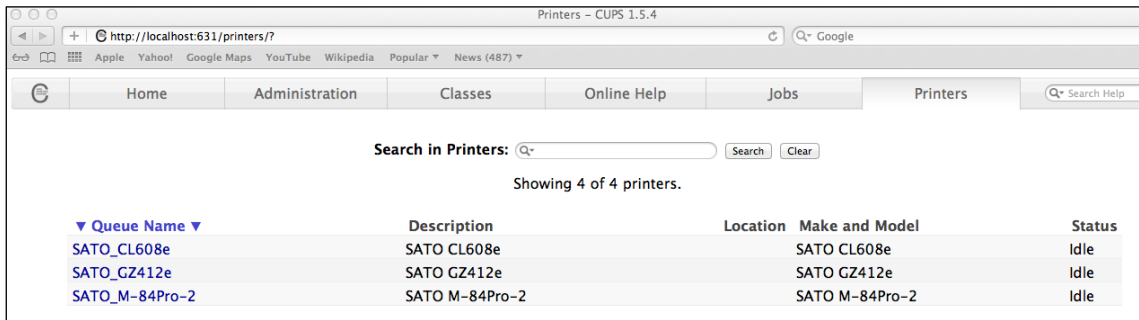
- 1) Open a web browser (example: Firefox web browser) and type in "<http://localhost:631/>" in the address bar.



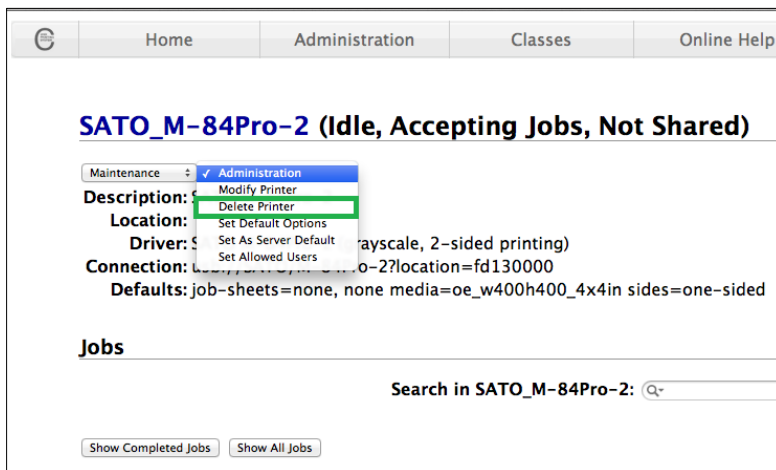
- 2) On the **Home** page, click **Administration** at the top of the menu.
- 3) Click **Manage Printers**.



- 4) Select the printer you wish to modify on the list.



- 5) On the Administration dropdown, select **Delete Printer**.

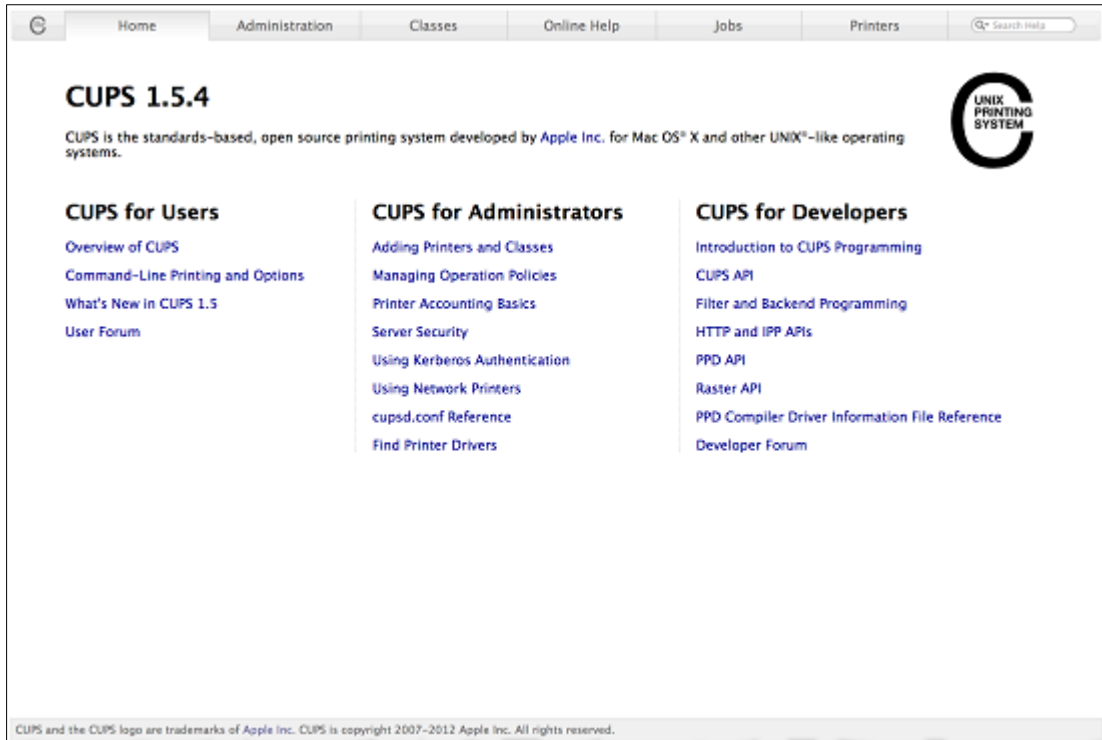


- 6) Click **Delete Printer** to confirm.

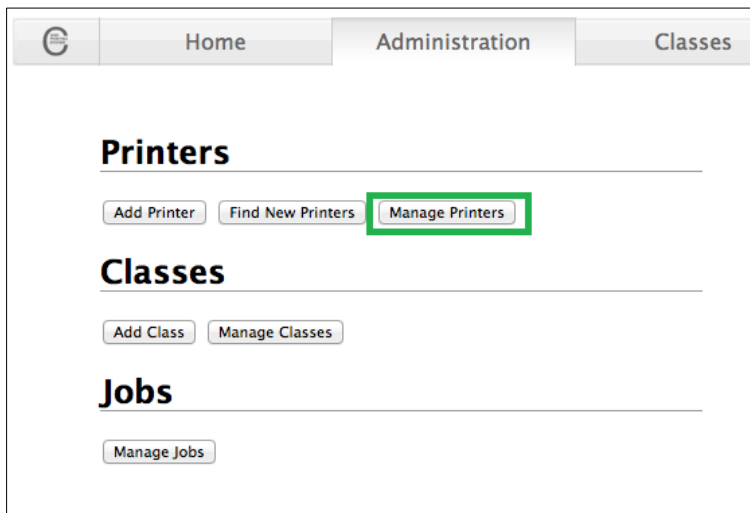
4.3.4 Setting Default Printer Options

To set the default printing options perform the following actions below:

- 1) Open a web browser (example: Firefox web browser) and type in "<http://localhost:631/>" in the address bar.



- 2) On the **Home** page, click **Administration** at the top of the menu.
- 3) Click **Manage Printers**.



4) Select the printer you wish to modify on the list.

Queue Name	Description	Location	Make and Model	Status
SATO_CL608e	SATO CL608e		SATO CL608e	Idle
SATO_GZ412e	SATO GZ412e		SATO GZ412e	Idle
SATO_M-84Pro-2	SATO M-84Pro-2		SATO M-84Pro-2	Idle

5) On the Administration dropdown, select **Modify Printer**.

SATO_M-84Pro-2 (Idle, Accepting Jobs, Not Shared)

Maintenance Administration
Description: S
Location: S
Driver: S
Connection: S
Defaults: job-sheets=none, none media=oe_w400h400_4x4in sides=one-sided

Jobs

Search in SATO_M-84Pro-2: Q

Show Completed Jobs Show All Jobs

6) Change the default option values and click the **Set Default Options** button to save changes.

Set Default Options for SATO_M-84Pro-2

General Banners Policies

General

Media Size: 4.00x4.00
Print Mode: Cutter (Head position)
Darkness Range: A
Darkness Level: 3
Print Speed: Printer Default
Cutter: Printer Default
Vertical Offset: 0
Horizontal Offset: 0

Set Default Options

4.4 Managing Printers from the Command Line

To find out more information on how to manage printers from the command line please refer to the CUPS documentation (ex. Raw SBPL, Image, and, PDF printing) at the address below:

<http://www.cups.org/documentation.php/doc-1.6/options.html>

4.5 Troubleshooting

The best way to troubleshoot the problem is to check the log file. The procedures are as follows:

- 1) Switch on the "debug" mode in the LogLevel directive for your CUPS daemon.
- 2) Edit */etc/cups/cupsd.conf* to have the line "LogLevel debug".
- 3) After changing the setting, restart the CUPS daemon by typing "*/etc/software/init.d/cups start*" on the command line.
- 4) Once the "LogLevel" has been modified, print a document and locate the log file generated. It can be found on */var/log/cups/error_log* directory of your machine.
- 5) Open the logs generated. This will give you an idea of what are the causes of the problems.

Note: Alternatively, you can also do it using the CUPS web interface.

SAATCHI